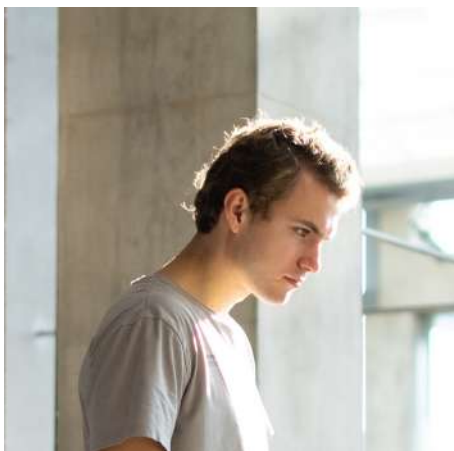




XTERN SUMMIT[®]

Turbo  **Med**[™]
ORTHOTICS



Reach new heights

Turbomed's latest foot drop AFO features a brand new unique and airy design that offers top of the line performance and comfort.

The sleek and simplified shape of the Xtern Summit is instantly recognizable by its refined and discreet lines, for a modern style that doesn't compromise on its user's freedom and autonomy. It also provides better range of motion, which increases the patients' confidence and well-being.

Like the original Xtern, the Xtern Summit sits on the outside of the shoe to facilitate maximized ankle movement while reducing the risk of injury. It combines extraordinary lightness, with proven comfort.

The Xtern Summit is manufactured with the highest quality materials such as carbon fiber, which promotes natural movement with minimized effort, providing more satisfaction, ease and mobility.

The Xtern Summit was designed for people with high individual standards, and is the expression of your lifestyle.



Lennart visiting the National Art Gallery in Ottawa, Canada.





Think outside the shoe

The Xtern summit, like the original Xtern, sits entirely outside the shoe, and is so flexible that it allows maximal range of motion and calf muscle strength. No more rubbing injuries or skin breakdowns: you'll barely notice it's there. Walking, running, mountain climbing, skiing? Not a problem! The Xtern Summit will follow you as far and as long as you want.

The Xtern Summit comes fully equipped with 10 lace clips for 5 pairs of shoes, as well as 2 complete sets of calf pads and straps.



Advantages



25% lighter than the regular Xtern

Made of highly durable thermoplastic and carbon fiber that makes it feel weightless



No skin contact

Exoskeleton design fits onto the outside of the shoe without touching the foot or the ankles



Adaptable

Easily conforms to uneven ground and slopes



Barely visible

The see through carbon frame design makes the Xtern Summit hardly visible



* FDA Registration No: 3011816892 FDA Medical Device Listing no: D246429
* Health Canada Medical Device Establ. Lic. No 6354 Class I
* U.S. Patent No.8529484 – Canadian Patent 2692534 – Europe Patent EP 2533734 – International Patent Pending



Enhanced performance

Allows all ankle movement with **18%** more power of dorsi-flexion and **35%** more media-lateral strength



Versatile

Goes from shoe to shoe in 5 seconds.
Fits majority of shoes



Symmetrical design

Simplifies the assessment process by fitting both left and right foot




My foot drop journey started seven years ago when a trampoline accident left me with a left knee dislocation and a severed peroneal nerve. Surgery was able to heal my knee, but I was left with an atrophied leg and needed to learn how to walk with a foot drop. Staying active would prove to be key for recovery. Through intense physiotherapy I quickly gained strength and stability. However, I struggled to walk without crutches. The stiff orthoses also did not help: This held me back and was frustrating.

One day, my mother discovered Turbomed, and I got my very first Xtern after a video call with François and Stéphane. That moment marked the start of my full functional recovery. My father still tells me how I walked normally after my first physiotherapy session with my Xtern. Nowadays, my foot drop never holds me back. I run, ski, climb, sail, cycle and even ice skate using my Xtern. The life changing impact the Xtern had on me inspired me to pursue a Master of Science in Biomedical Engineering and work with Turbomed to further develop new innovative orthoses."

— Lennart
Biomedical Engineering student and
foot drop patient



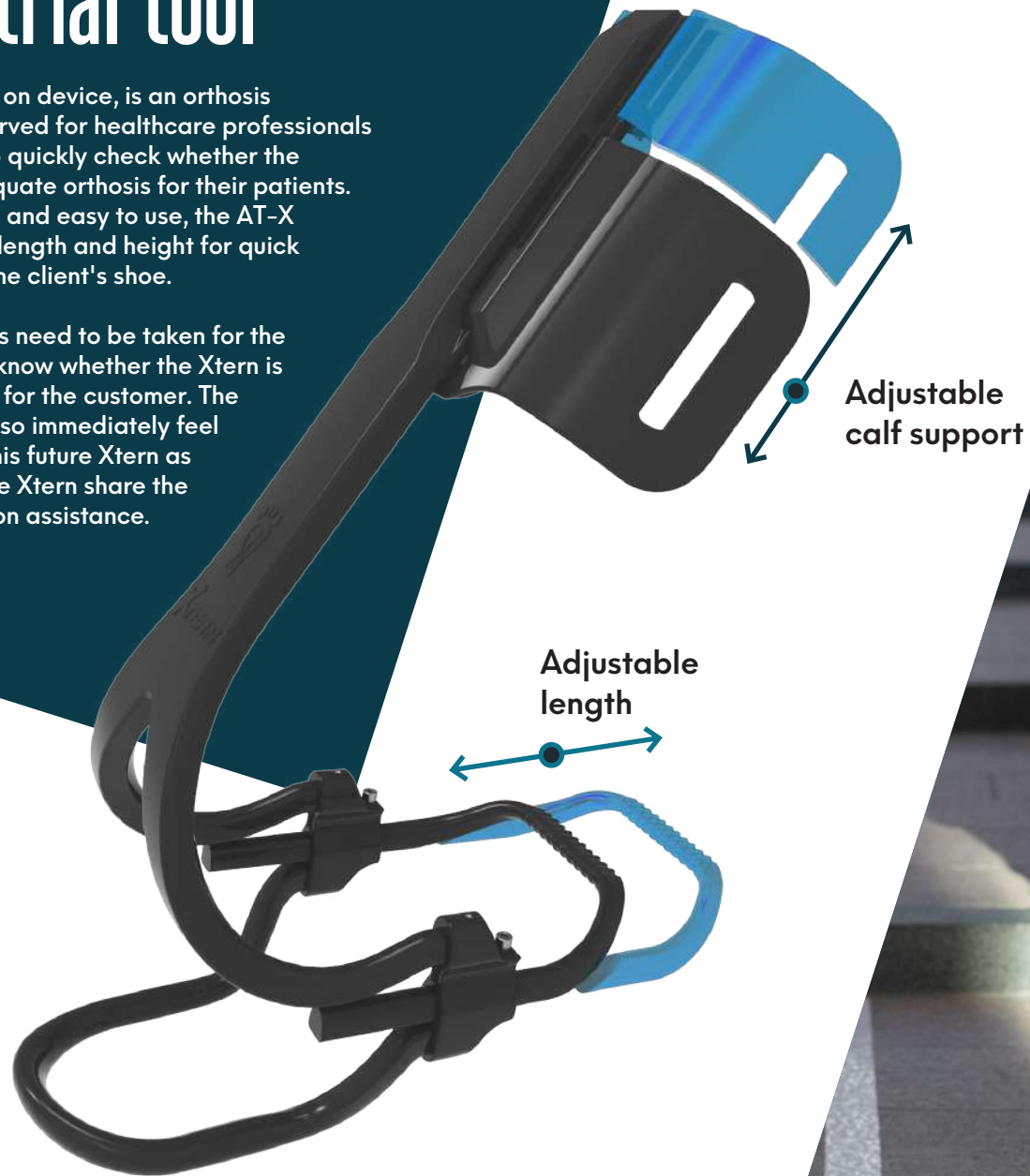


	 	
ASSEMBLY TIME	8-10 MINUTES	5-7 MINUTES
AVERAGE WEIGHT	350g	275g
< 0.1% BREAKING RATE	●	●
100% DYNAMIC AFO	●	●
NEW PROFILE AND SEE THROUGH DESIGN		●
ADDITIONAL CALF PAD KIT		●
PREMIUM SOFT PARTS		●
ADJUSTABLE U FRONT SECTION LENGTH		●
DORSIFLEXION REACTION SPEED	2.45 m/s	5.55 m/s
WARRANTY ON PLASTIC AND CARBON FIBER PARTS	2 YEARS	3 YEARS
NUMBER OF LACE CLIPS INCLUDED	5	10
2 MONTH SATISFACTION GUARANTEE	●	●
SHOE TO SHOE IN 5 SECONDS	●	●
NO SKIN CONTACT	●	●
SYMMETRICAL DESIGN	●	●
PEDIATRIC SIZE AVAILABLE	●	
MEDIO-LATERAL STRENGTH		+35%
INSURANCE COVERAGE	●	●
VA, MEDICARE AND MEDICAID COVERAGE	●	●
PDAC APPROVED (LCODE 1951)	●	●

AT-X trial tool

The AT-X, or try on device, is an orthosis exclusively reserved for healthcare professionals to allow them to quickly check whether the Xtern is an adequate orthosis for their patients. Fully assembled and easy to use, the AT-X is adjustable in length and height for quick installation on the client's shoe.

Only a few steps need to be taken for the professional to know whether the Xtern is the right choice for the customer. The customer can also immediately feel the benefits of his future Xtern as the AT-X and the Xtern share the same dorsiflexion assistance.



Sizing chart

An assessment from a healthcare professional is recommended to confirm whether the indications and limitations listed below make the patient a candidate for the Xtern. Sizing can then be determined using the patient's foot width and length.

Clinical indications

- Drop foot
- Dorsiflexion weakness
- Peroneal nerve injury
- Idiopathic Toe-walking
- Charcot Marie Tooth (CMT)
- Stroke (CVA)
- Multiple Sclerosis (MS)
- Cerebral Palsy (CP)
- Hemiplegia
- Guillain-Barre Syndrome (GBS)
- Motor neuropathy
- Motor Neurone Disease (MND)
- Back injury or surgery
- Cancer
- Knee injury or surgery

Known clinical limitations

- × Inappropriate footwear
- × Gross fixed deformities of foot or ankle
- × Severe spasticity
- × Quadriceps weakness
- × Severe knee weakness
- × Crouch gait

SHOE SIZE							XTERN KIT SIZE SELECTION				
US				UK		EU		PRODUCT: 101100-SA-L	PRODUCT: 101100-SA-M	PRODUCT: 101100-SA-S	PRODUCT: NOT YET AVAILABLE
MEN		WOMEN		KIDS				LARGE	MEDIUM	SMALL	PEDIATRIC
16				15.5		51		●			
15.5				15		50.5		●			
15				14.5		50		●			
14.5				14		49.5		●			
14				13.5		49		●			
13.5				13		48		●			
13				12.5		47.5		●			
12.5				12		47		●			
12				11.5		46.5		●			
11.5				11		46		●	●		
11				10.5		45		●	●		
10.5		11.5		10		44.5		●			
10		11		9.5		44		●			
9.5		10.5		9		43		●			
9		10		8.5		42.5		●			
8.5		9.5		8		42		●			
8		9		8	Y	7.5		41.5		●	●
7.5		8.5		7.5	Y	7		40.5		●	●
7		8		7	Y	6.5		40		●	
6.5		7.5		6.5	Y	6		39		●	
6		7		6	Y	5.5		38.5		●	
5.5		6.5		5.5	Y	5		38		●	
5		6		5	Y	4.5		37.5		●	
4.5		5.5		4.5	Y	4		37		●	
4		5		4	Y	3.5		36		●	
3.5		4.5		3.5	Y	3		35.5		●	
3		4		3	Y	2.5		35		●	
2.5		3.5		2.5	Y	2		34.5		●	
				2	Y	1.5		33.5			
				1.5	Y	1		33			
				1	Y	13	C	32.5			
				13	C	12.5	C	31			
				12.5	C	12	C	30.5			
				12	C	11.5	C	30			
				11	C	10.5	C	29			
				10.5	C	10	C	28			
				10	C	9.5	C	27.5			
				9.5	C	9	C	27			

* HCPCS Code L1951 (PDAC VALIDATED) : Ankle foot orthosis, spiral, (institute of rehabilitative medicine type). Plastic or other material, prefabricated, includes fitting and adjustment.

* Suggested L codes. The responsibility for accurate coding lies with the patient care facility that selects the product, fits the patient, and bills for the service

Meet the Turbomed team



Stéphane Savard

Stéphane Savard has been an entrepreneur and businessman for more than 32 years. Following his studies in prosthetic orthoses, he became a shareholder in the family business designing, manufacturing, adjusting and repairing all orthoses available on the market, both in the laboratory and in hospitals. He also worked closely with health professionals to satisfy customers requiring orthotics and/or technical aids.

Stéphane has been working full time for TurboMed Orthotics since January 2015, and owns all shares alongside two members of his family.



François Côté

François Côté has been a mechanical engineering and naval architecture designer for Groupe Océan for over 20 years. He's worked in research and development on the design and construction of new fleet tugs, and has been involved in the engineering of several bold and far-reaching projects such as Groupe Océan shipyard's new haulage system at L'Île-aux-Coudres.

In 2001, François suffered a serious snowmobile accident, breaking his 2 legs and 2 knees. This left him with various disabilities, including a full foot drop to the left leg. This accident affected his personal and sporting life, but didn't extinguish his desire to push his limits.

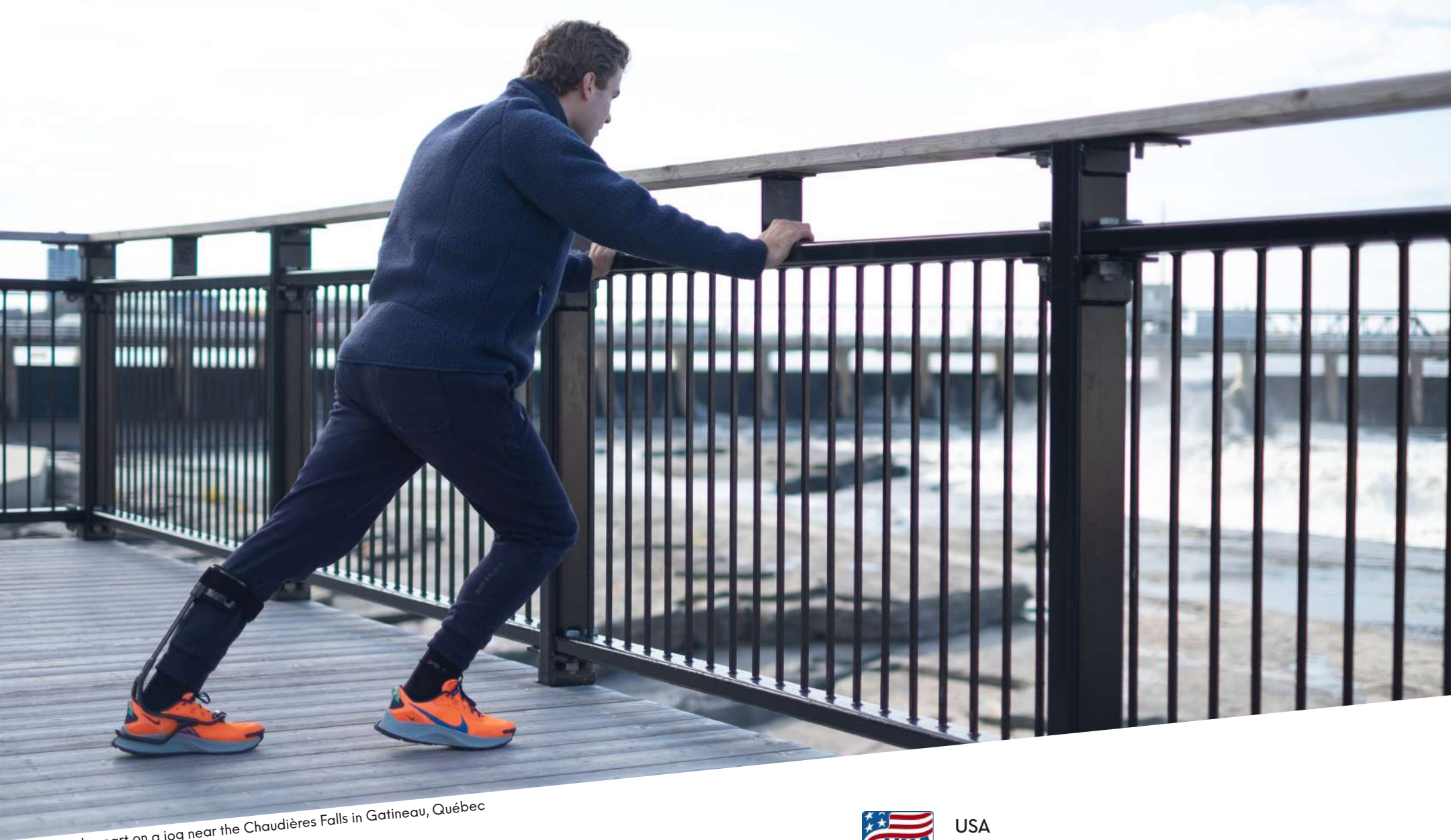


Connect with others!
Turbomed Foot Drop Club



A tool for everyone






Lennart on a jog near the Chaudières Falls in Gatineau, Québec

 Turbomed Orthotics

 Turbomed Foot Drop Club (Customer club)

 Turbomed



USA
turbomedusa.com



Worldwide
turbomedorthotics.com

Turbomed Orthotics Inc.
240 Sydney, Suite 101
St-Augustin-de-Desmaures QC G3A 0P2
Canada